

# MY LITTLE GRASS SHACK IN KEALAKEKUA, HAWAII

Words and Music by BILL COGSWELL,  
TOMMY HARRISON and JOHNNY NOBLE

**Moderato**  
C7 F F13 C#m7 F7 G#dim7/F F7 Bb Eb6 Bb Ebm6

*f* *rall.*

Bb F7 Bb F7 Bb

*a tempo*

There's a place in Ha - wai - i that is ver - y dear to me. I am

*mf* *a tempo*

G7 C7 F7 Ebm6 F7

home-sick as can be. Won't you list - en to my plea? I want to go

Chorus:

B $\flat$



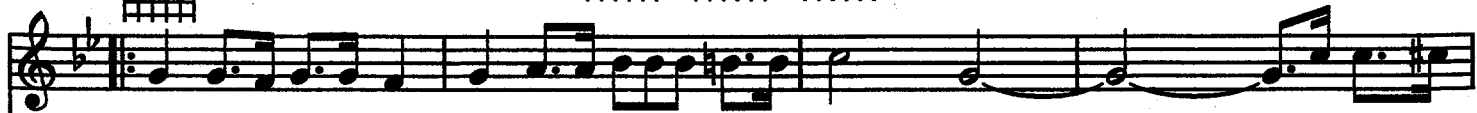
Gm



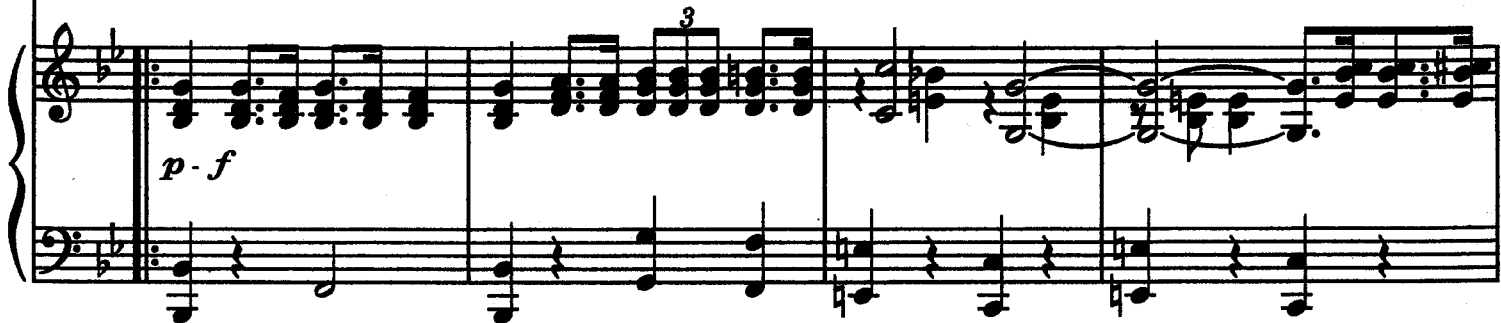
G7



C7



back to my lit - tle grass shack in Ke - a - la - ke - kua, Ha - wai - i. I want to  
*Ke - ah - la - ke - kuah,*



*p - f*

F7



B $\flat$



D7



be with all the ka - nes and wa - hi - nes that I knew long a - go.  
*kah - nees va - kee - nees*



Gm



B $\flat$



D7



D+



D7

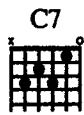


G7

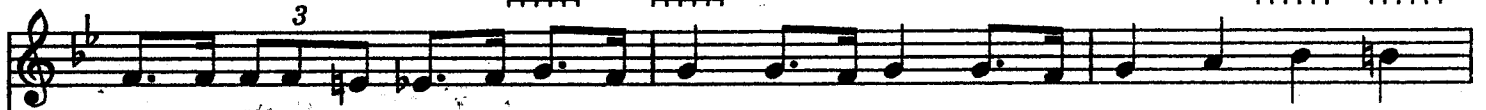
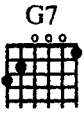
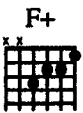


I can hear old gui-tars a - play - ing, on the beach at Ho - o - nau -  
*Ho - oh - now -*

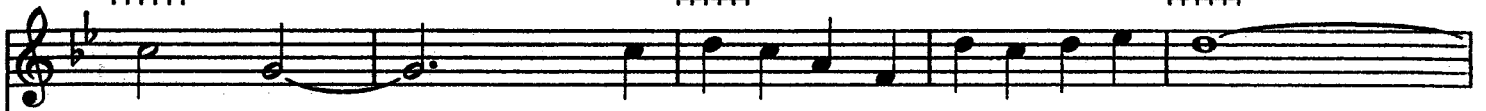
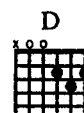
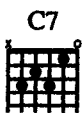




nau. \_\_\_\_\_ I can hear the Ha-wai - ians say - ing "Ko - mo - mai no ka - u - a i - ka  
now \_\_\_\_\_ "Ko - mo myee kah - oo - ah o - vah hah -



ha - le we - la - ka - bao." It won't be long 'til my ship will be sail - ing back to  
lee vay - la - ka - how."



Ko - na \_\_\_\_\_ A grand old place that's al - ways fair to see. \_\_\_\_\_





F7 Cm7 Dm Gdim F7 Fdim F7 Bb

Hu - mu - hu - mu, Nu - ku - nu - ku a pu - a - a goes swim-ming by,  
 Hoo - moo - hoo - moo, Noo - koo - moo - koo ah poo - ah - ah

F7 Cm7 Dm Gdim F7 Fdim F7

where the Hu - mu - hu - mu, Nu - ku - nu - ku a pu - a - a goes swim-ming  
 Hoo - moo - hoo - moo, Noo - koo - moo - koo ah poo - ah - ah

1. Bb C#dim F7 F+ 2. Bb Cm Bb Ebm6 Bb

by. \_\_\_\_\_ I want to go by. \_\_\_\_\_